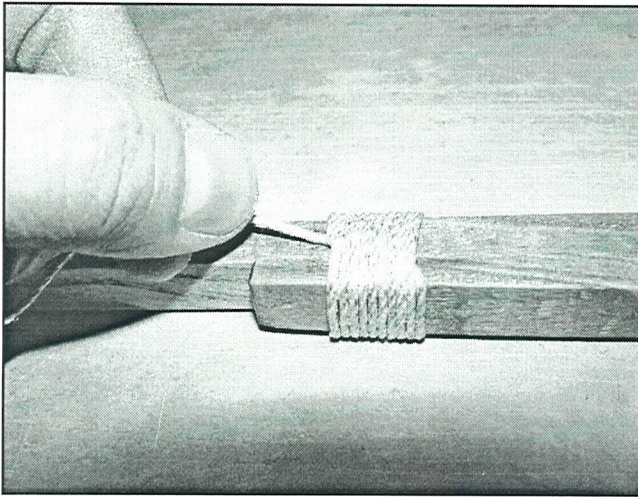
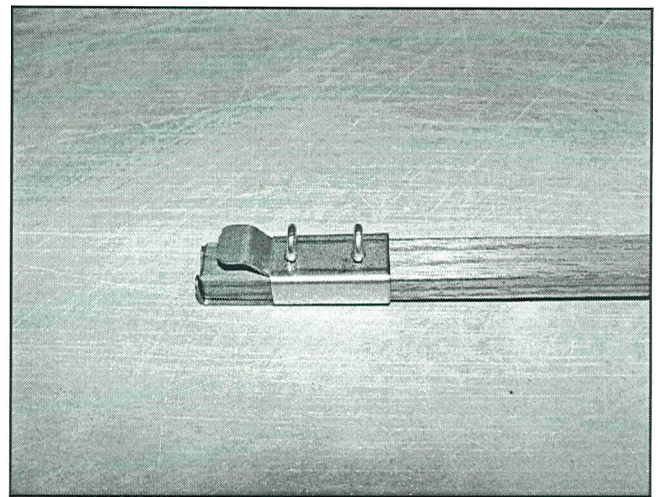


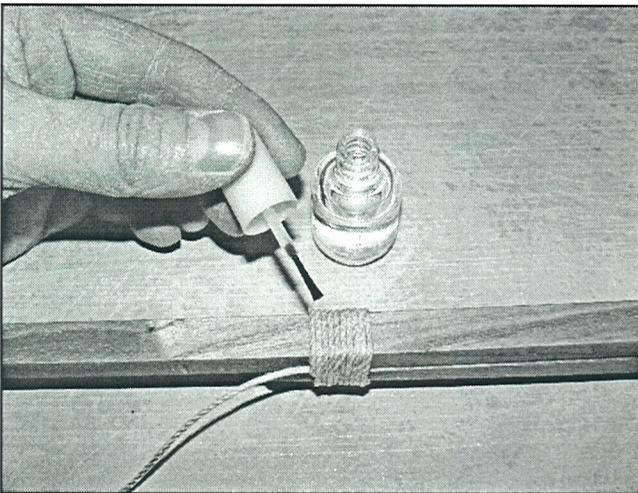
Chapter 2: Woodwork



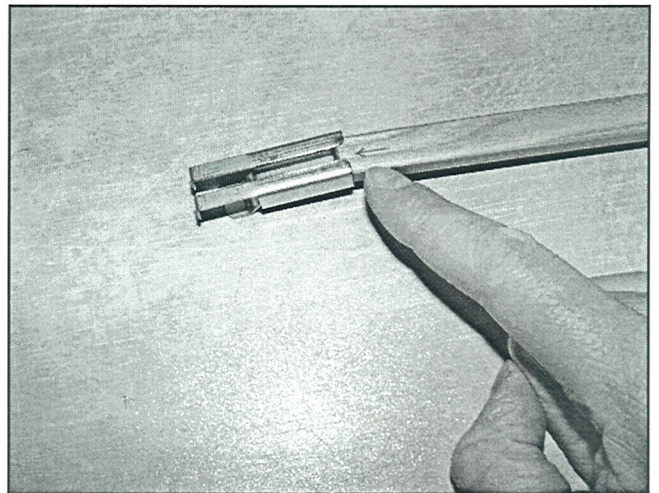
Pull the free hemp cord end so that the loop comes under the turns



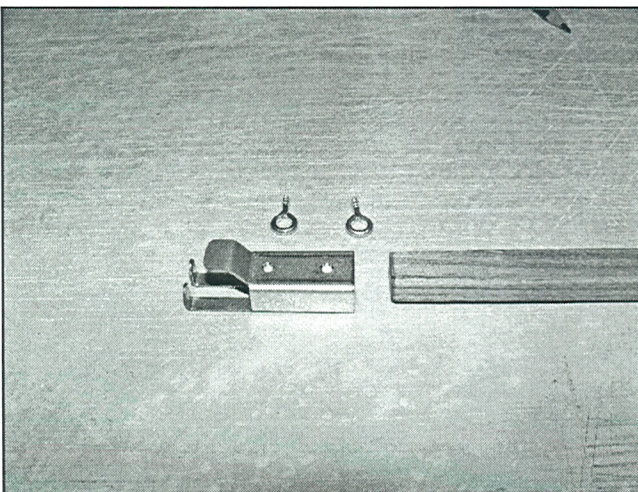
Finished.



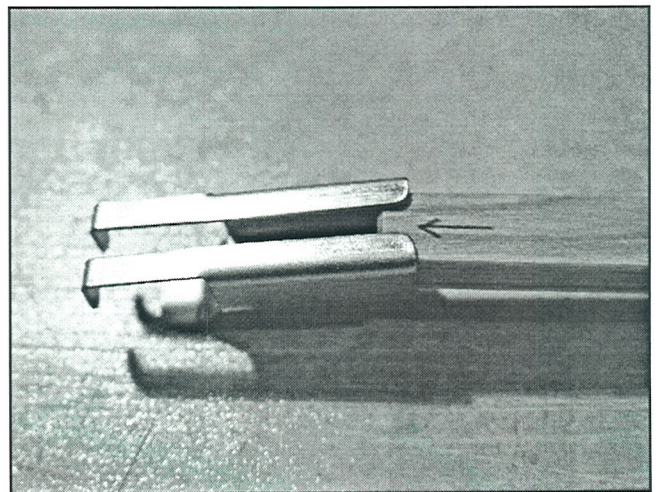
Fix the tackle with varnish.



Put a metal cap on the top end of the middle rod.
Do not fix it with ring-screws at this time.

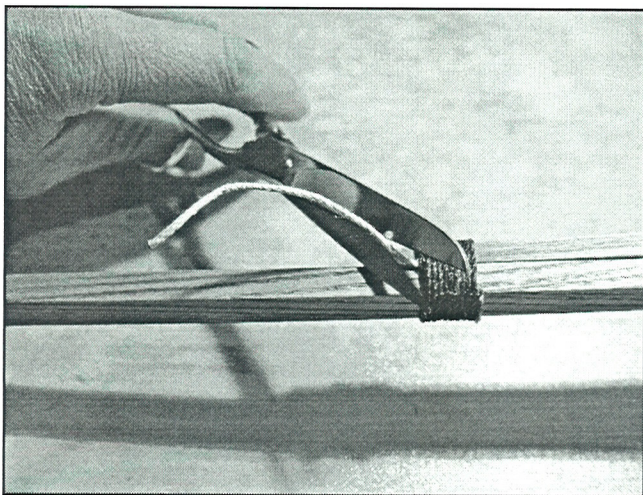


Complete the bottom end of the middle rod with a metal cap and two ring-screws.
Take care that the little arrow on the other end of the rod is on the opposite side of the screws.



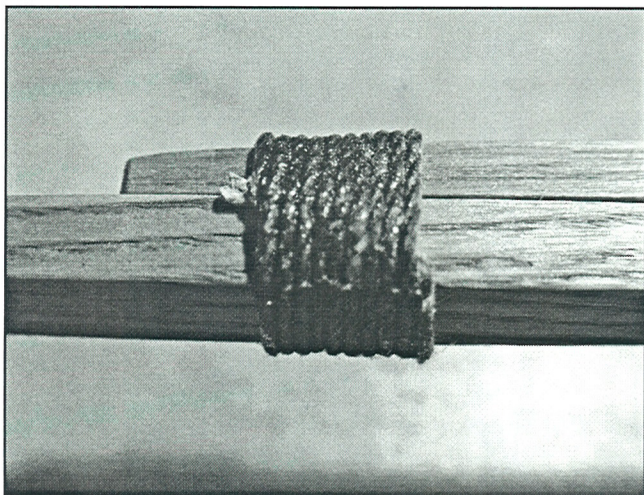
Pay attention to the arrow.

Chapter 2: Woodwork



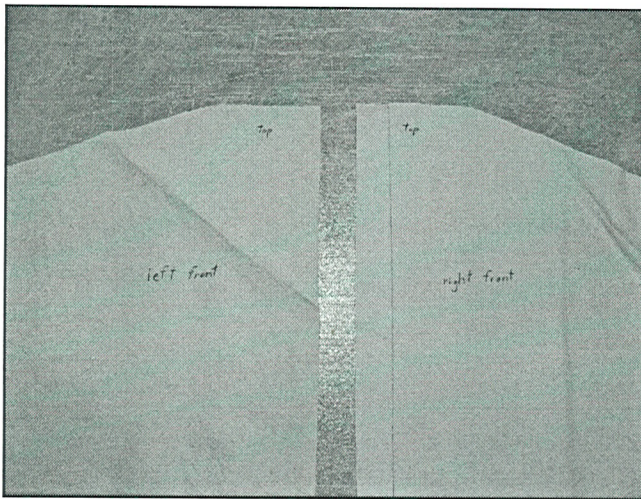
After drying of the varnish cut off the end of the hemp cords.

Take care, the varnish need to be dry.

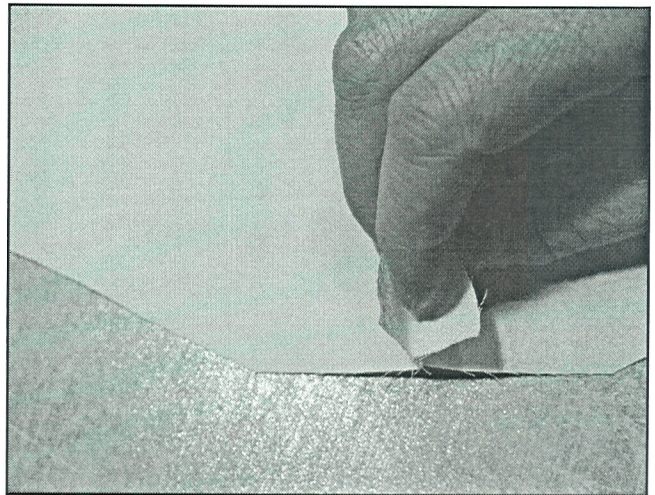


Finished.

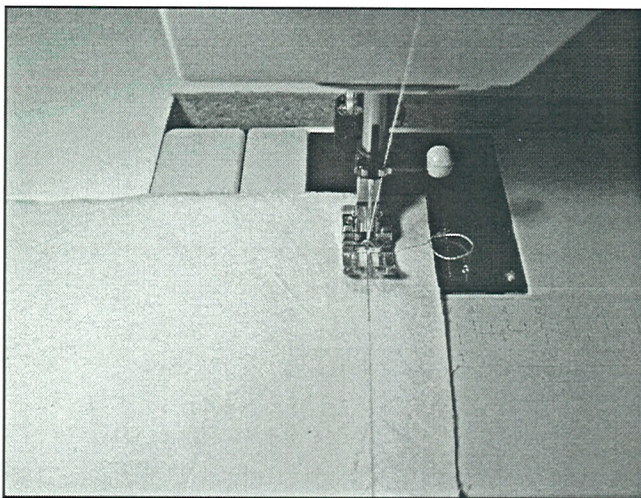
Chapter 3: The Sail



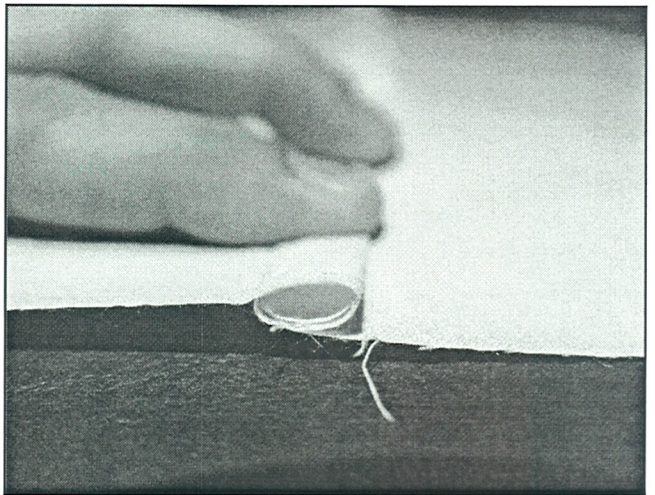
The two parts of the sail.
Make a line 2cm from the long edge on the right part.



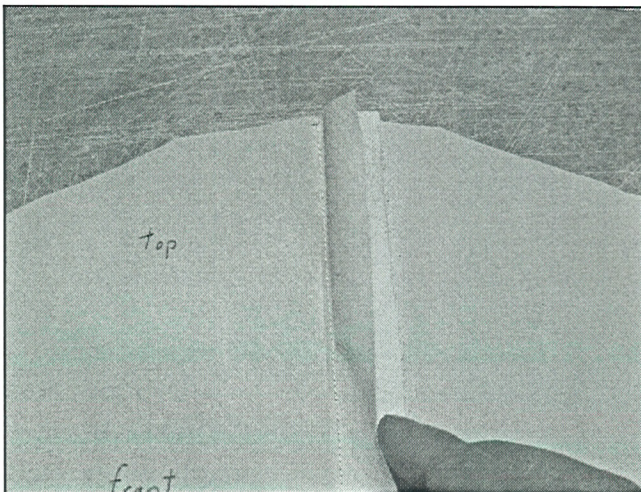
Front side view.



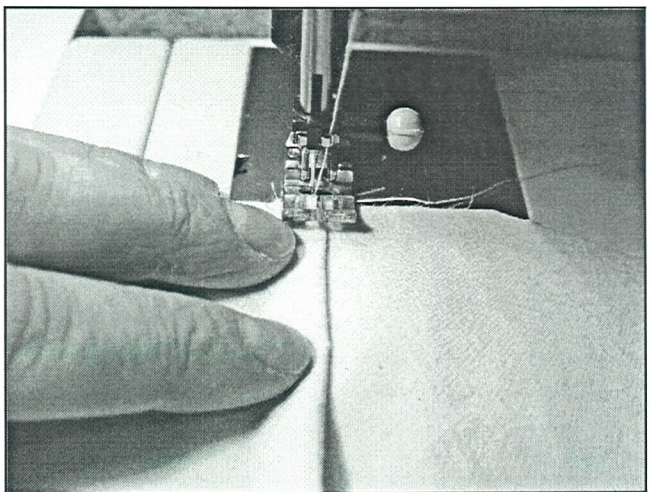
Sew the two parts together.
Start from the bottom of the kite.
Use a stitch length around 2-3mm.



Fold the cloth for making a flat-fell seam.
Iron it to fix the folding.
If you need, you can use needles for additional fixing.

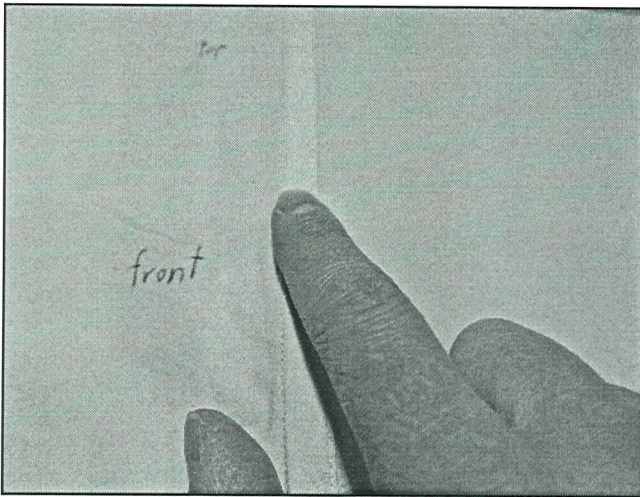


Finished.

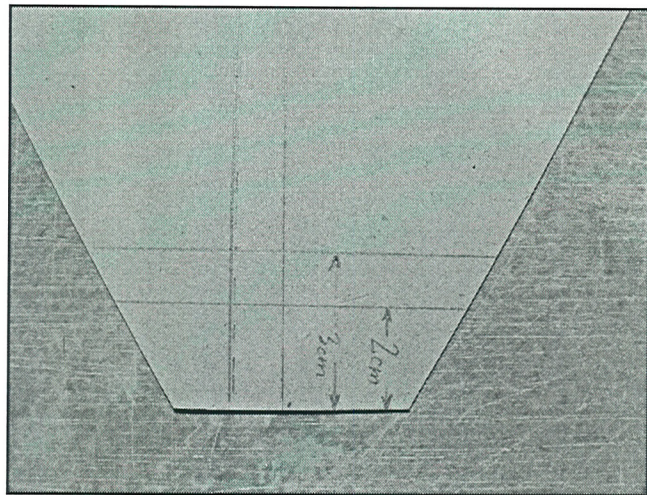


Start the sewing of the middle seam on top of the sail.

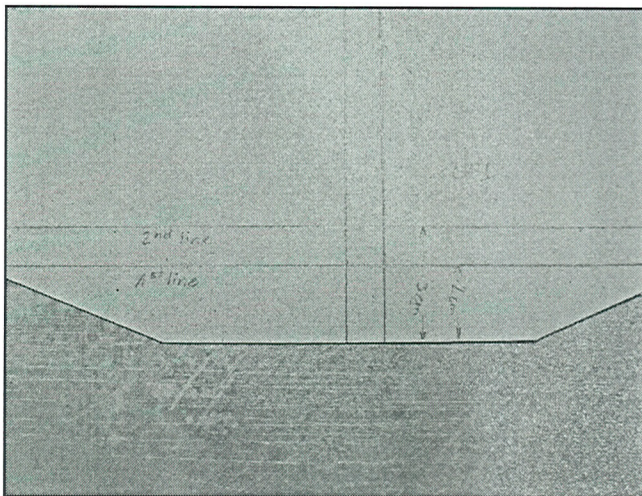
Chapter 3: The Sail



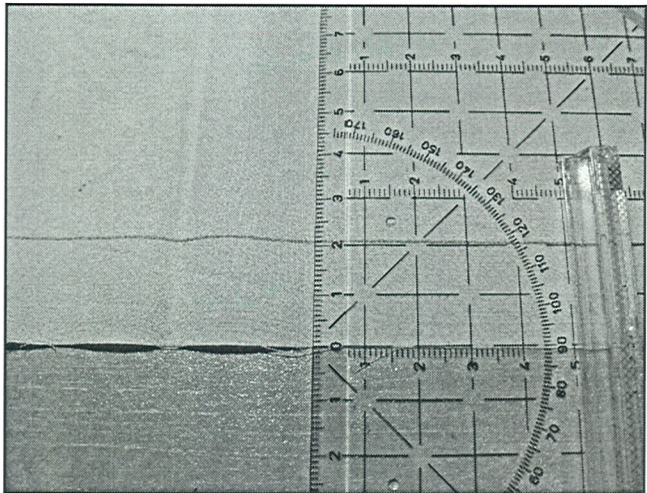
Finished.



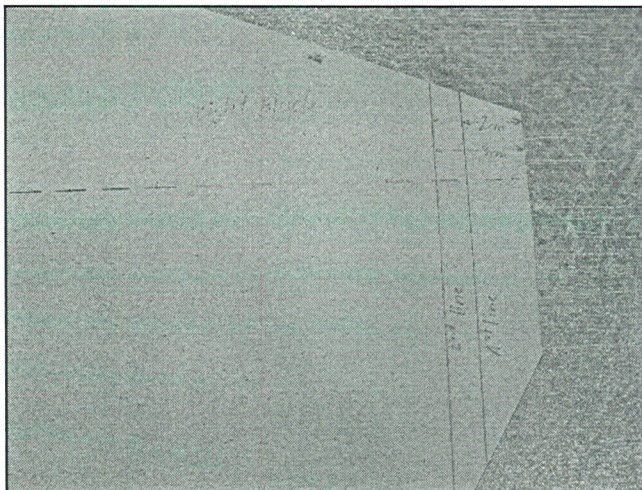
Bottom corner: 2cm and 3cm



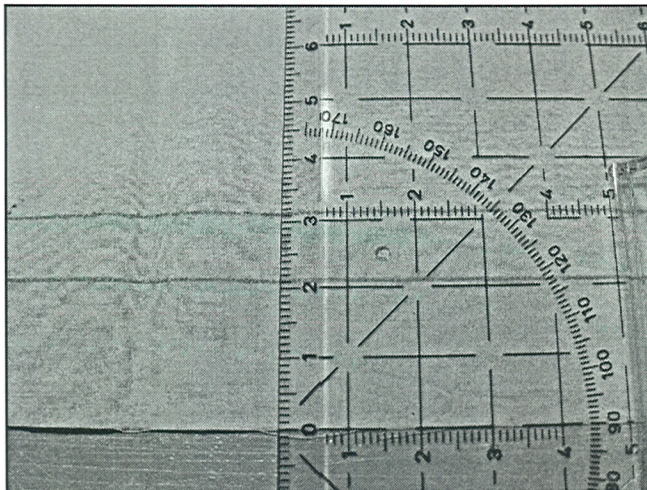
Turn the sail and work now on the reverse side.
Draw two lines on the four corners.
Top corner: 2cm and 3cm



First line.

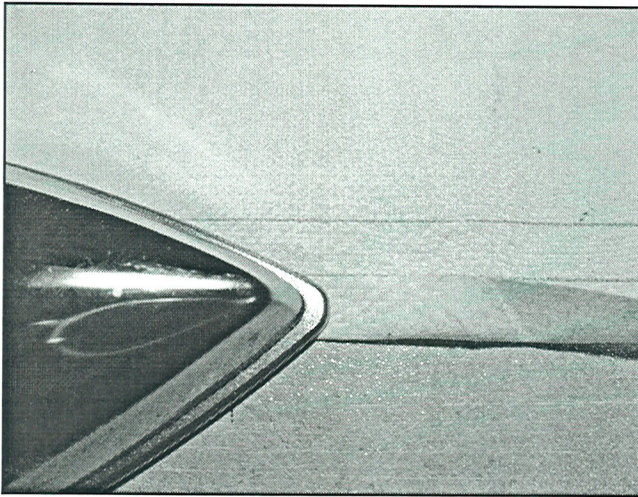


Right and left corner: 2cm and 3cm

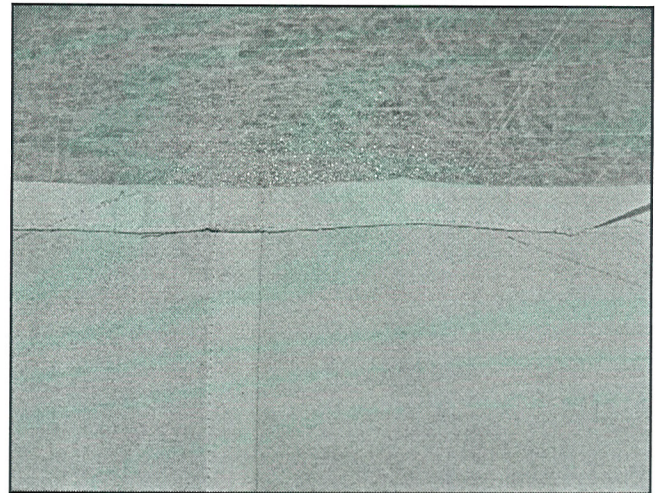


Second line.

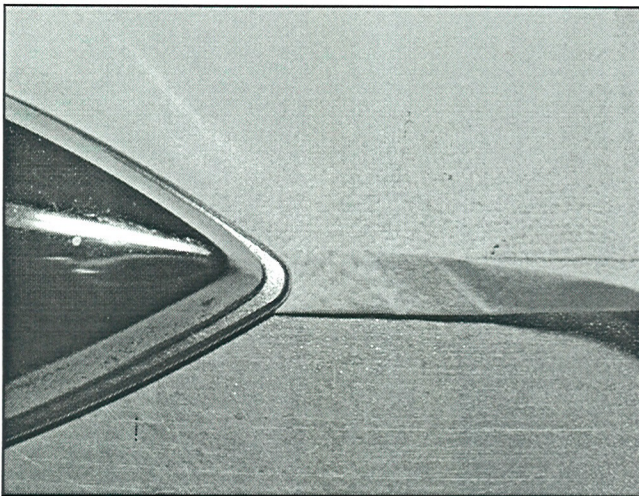
Chapter 3: The Sail



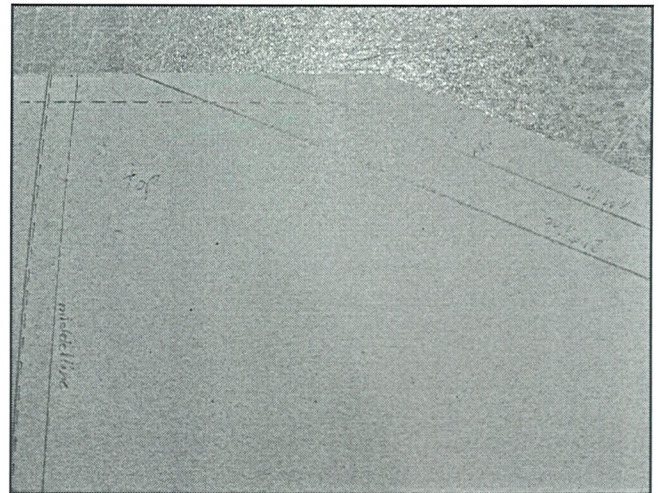
Fold to the first line and fix it with the iron.



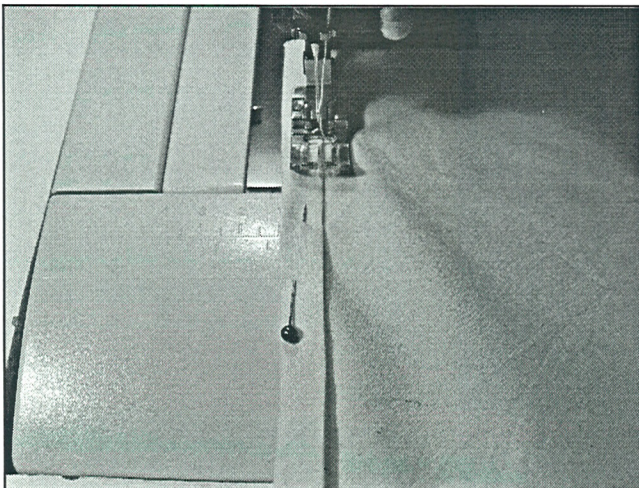
Finished.



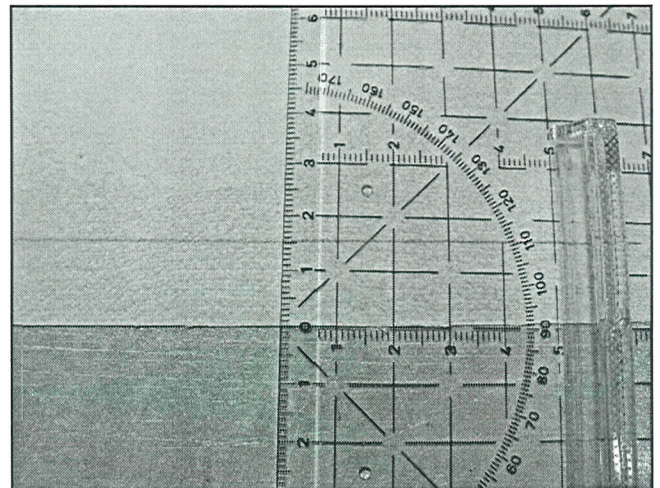
Fold it again to the second line and fix it with the iron. If you need, you can use needles for additional fixing.



Draw two lines on the four outside edges.
First line: 1,5cm
Second line: 3cm

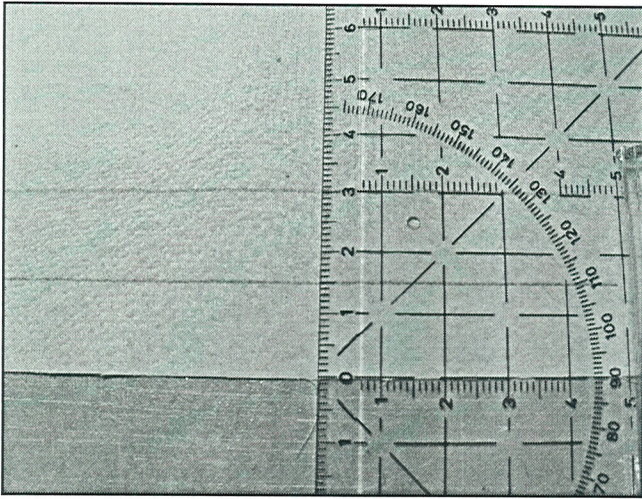


Sew the four corners.

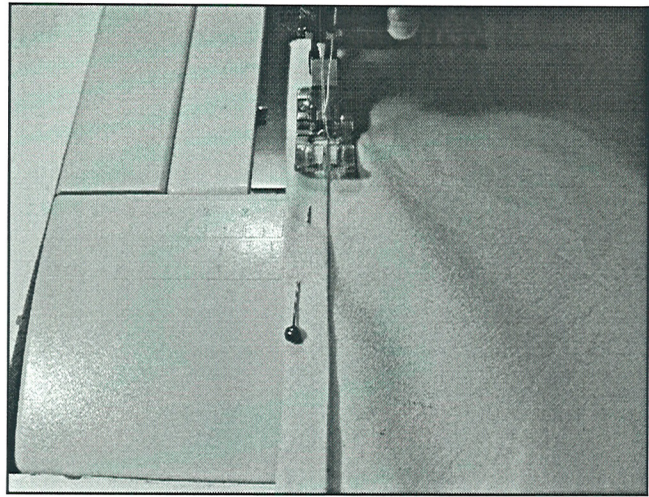


First line.

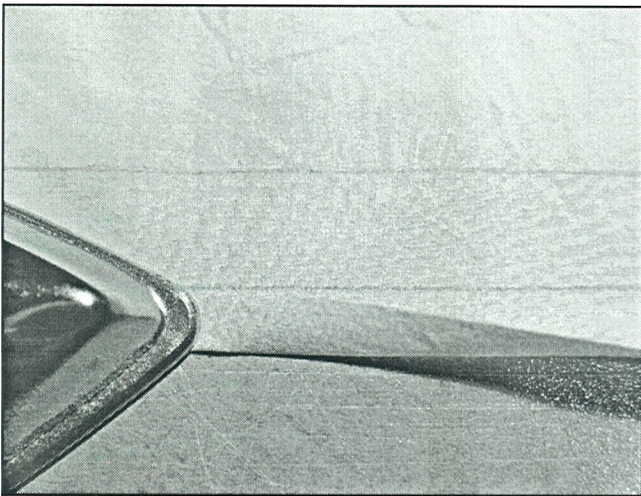
Chapter 3: The Sail



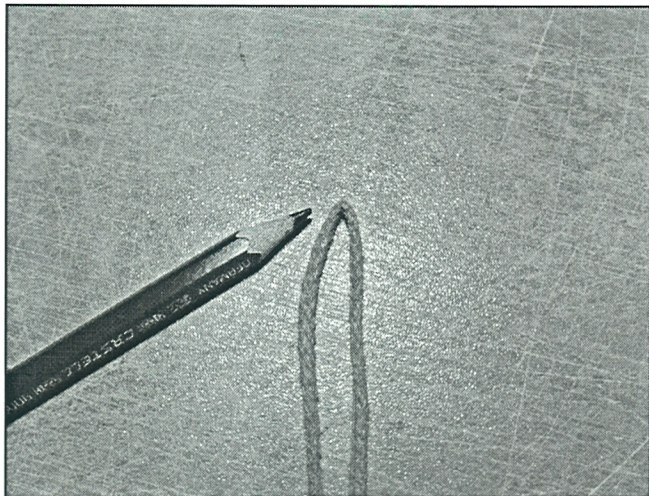
Second line.



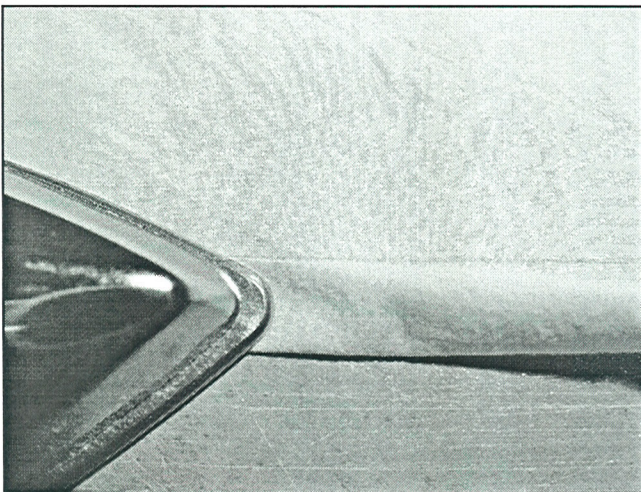
Sew the four edges.
Take care to sew near the inner edge.



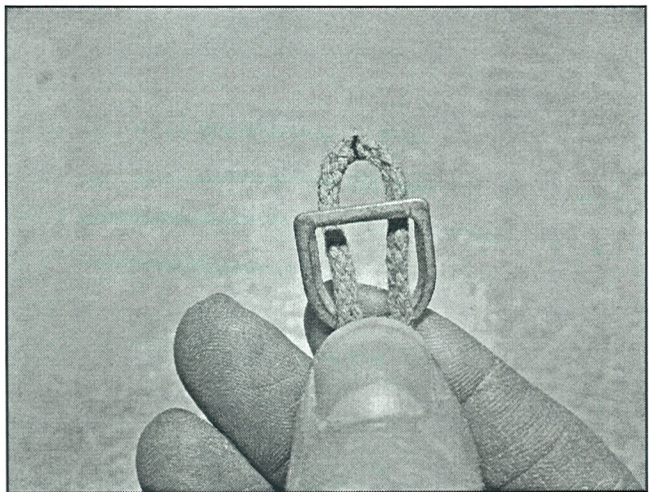
Fold to the first line and fix it with the iron.



Measure 615cm of the 3mm hemp cord and cut off.
Make a mark in the middle.



Fold it again to the second line and fix it with the iron.
If you need, you can use needles for additional fixing.



Make a knot.
Step 1

Pay attention on the mark.