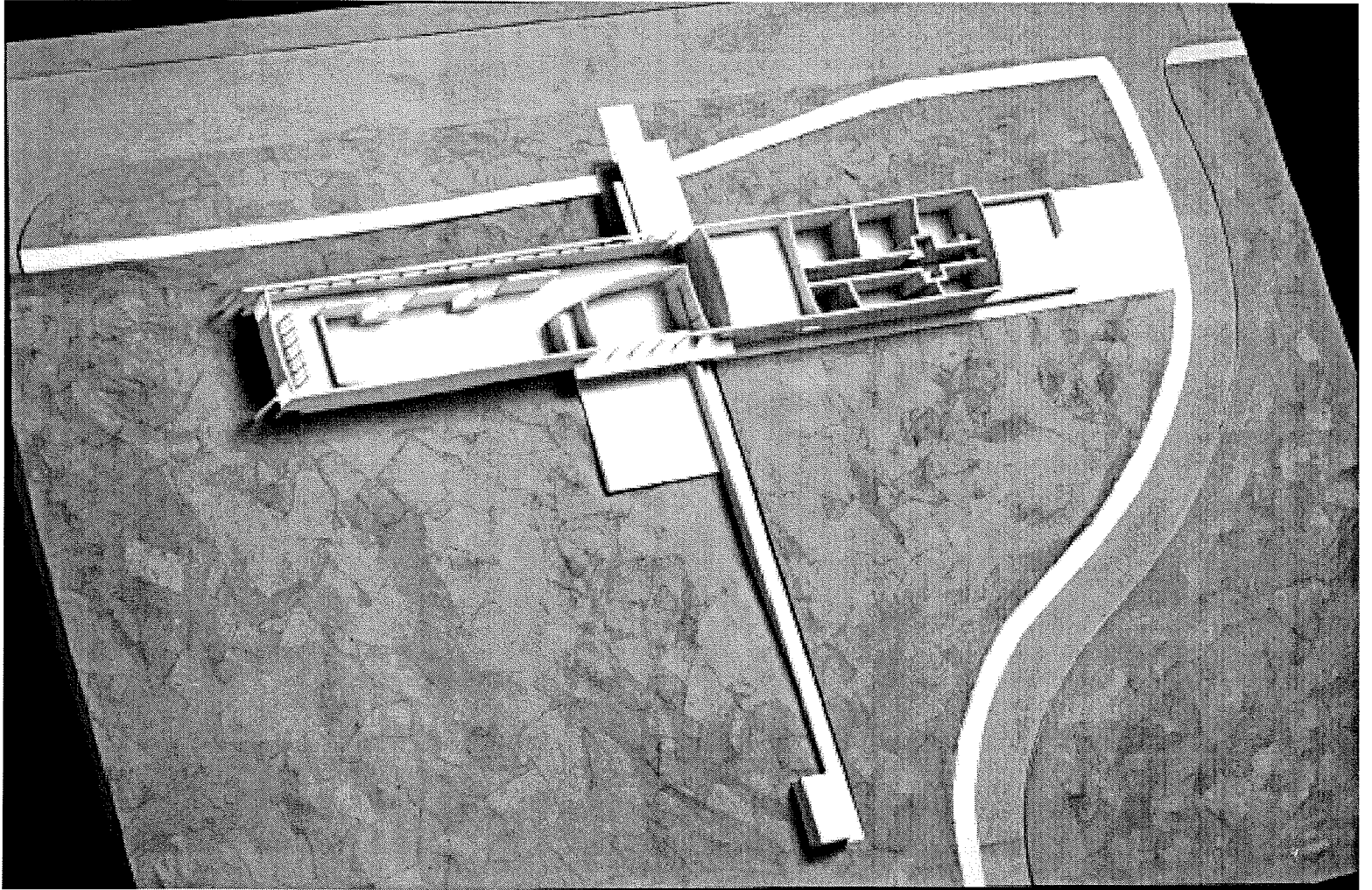
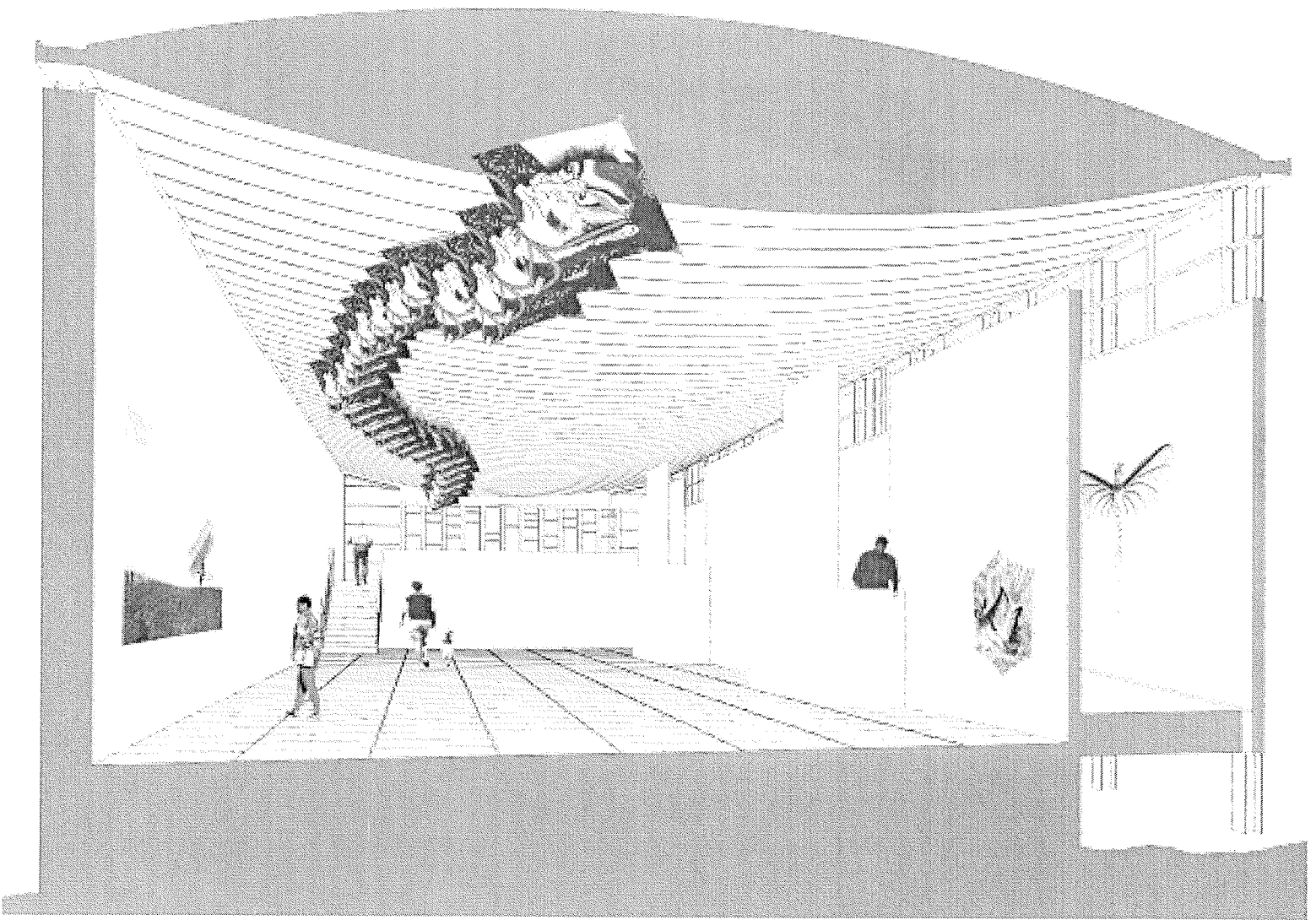


World Kitz Museum plans



Fohleder Architects
Seattle

World Kite Museum



Rohleder Architects
Seattle

Tim L.

size

1580 sq. ' —

height on 30'

330' long —

45' wide

harsh climate —

~~blow~~ sand-blasting conditions

~~metal for concrete~~ w/ natural weathering —
exterior — metal —
construction — concrete

weathering —
COR TEN
type of steel
alloy — rusts —
becomes self-
protective
bar

roof — metal skin

* — priorities to be assessed
interior — work on
exterior — later

Reason for simple shell

Long Beach — rural community village

Portland — 2 ~~hrs.~~ 45

Seattle — 3 hrs. 45 min.

lot of tourism

— Pacific Coast highway

add Long Beach to circuit

Some natural light

~~no~~ little south light,
more north light,

Tim

previous work

worked in N. Mex.

focused on design



ASU fine arts center

Santa Fe museum of fine arts

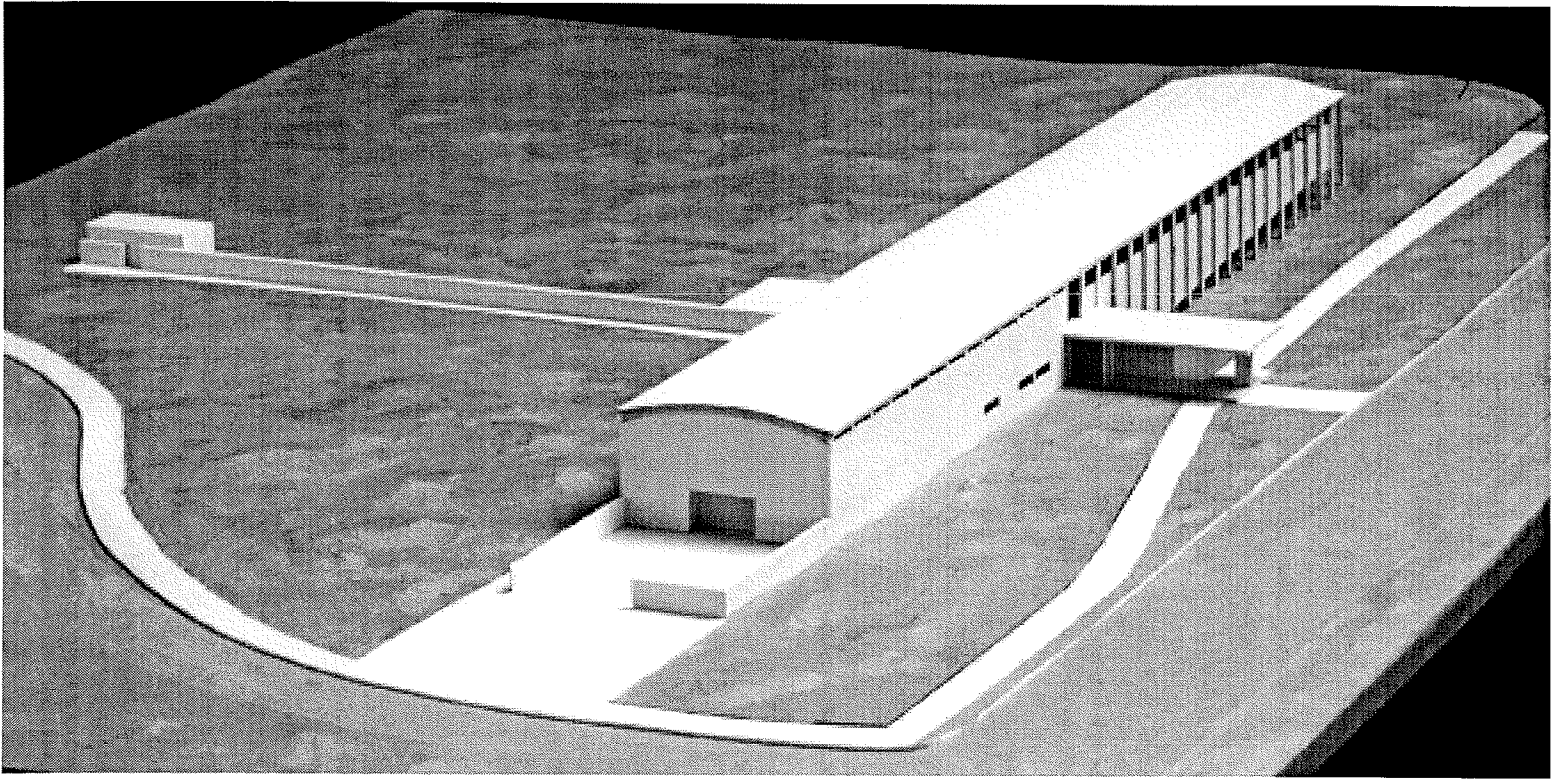
American Heritage Center to
Laramie

has done small projects — consultant

Pendleton, OR.

Tamustalik Institute

Conf. Tribes of the Umatilla
Indian Reservation



World Kite Museum and Hall of Fame

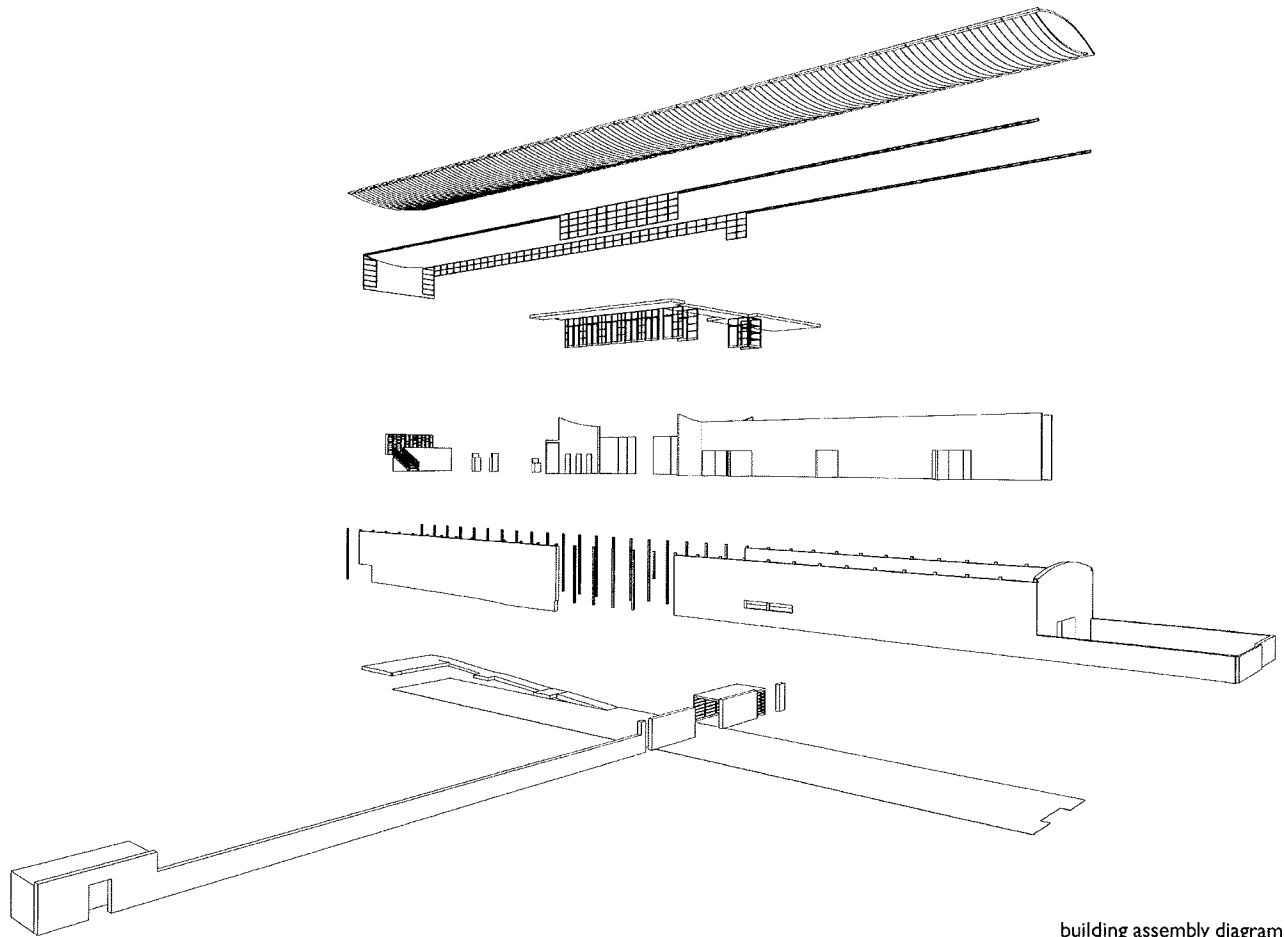
Long Beach, Washington

Schematic Design Completed March 2000

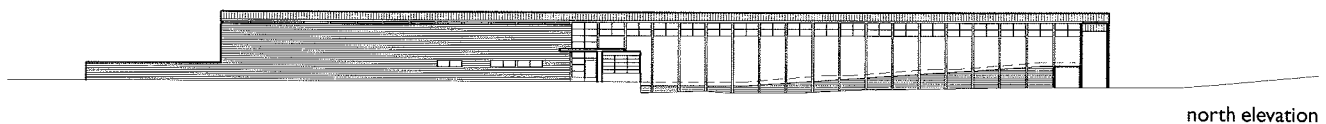


World Kite Museum and Hall of Fame

Long Beach, Washington



building assembly diagram

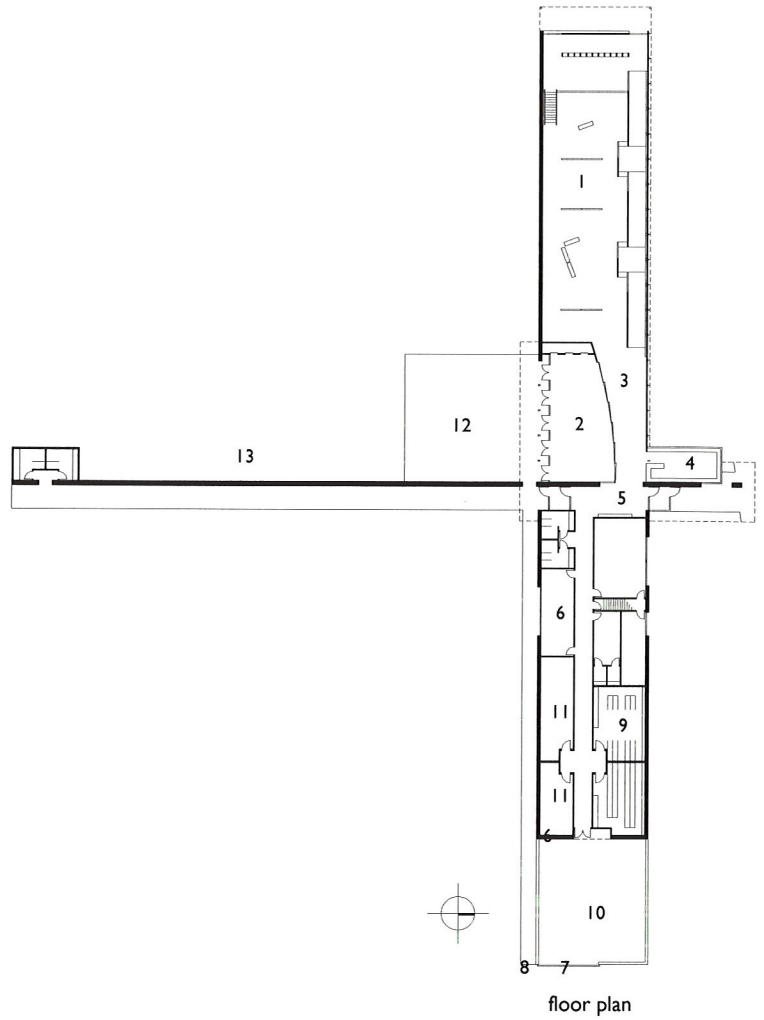
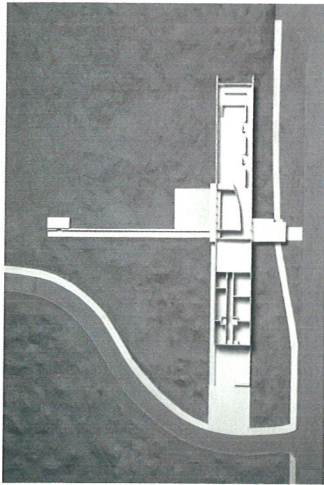


north elevation

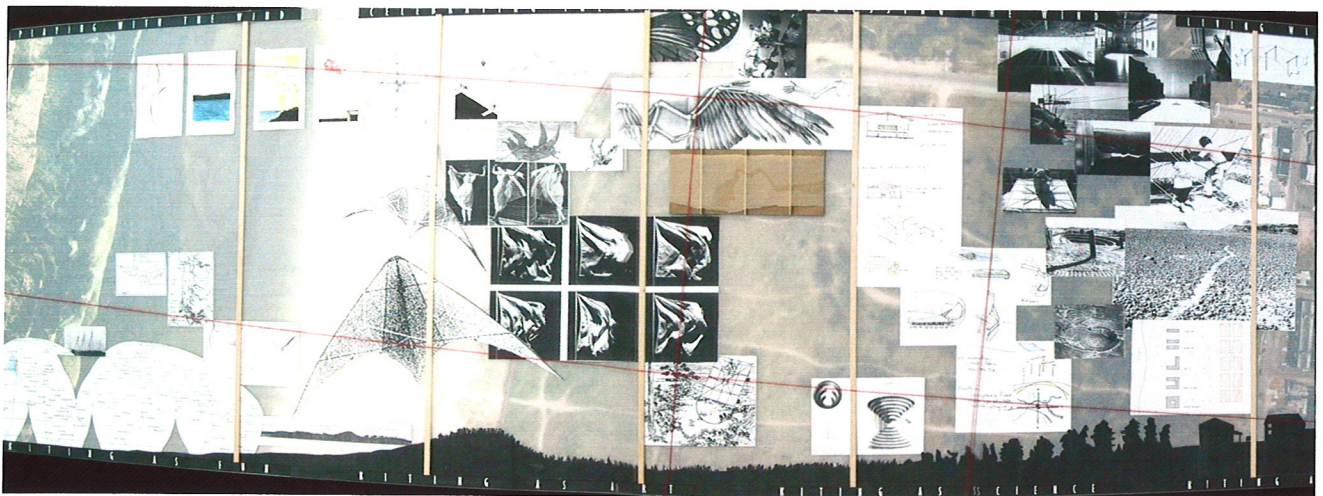
This 15,000 square foot facility is sited in the rolling grasses and dunes of Washington's Long Beach Peninsula, a 30-mile stretch of beach just north of the mouth of the Columbia River on the Pacific Ocean. The long narrow building rises up out of the earth, pointing toward the ocean and sky. Archival storage and administration offices occupy the grounded end of the building, counterbalancing the light, airy exhibit hall that will house one of the world's largest collections of kites. The building is bisected by a north-south wall, which signals the entrances and protects an outdoor courtyard to the southwest. The calm, quiet nature of the building contrasts with the lively, ephemeral objects it holds. Building forms were designed and materials were selected to withstand the often violent forces of nature encountered on the exposed site.

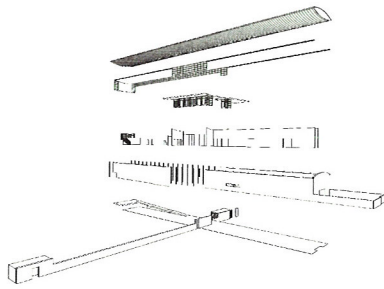
World Kite Museum and Hall of Fame

Long Beach, Washington

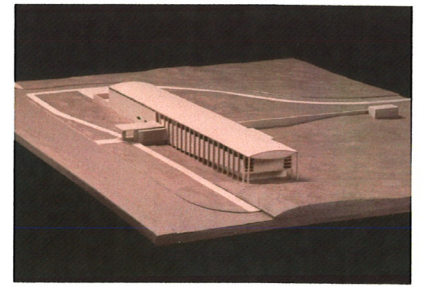


- 1. exhibit hall
- 2. multi-purpose room
- 3. rolling wall
- 4. lobby
- 5. gift shop
- 6. administration
- 7. archival storage
- 8. research
- 9. collections
- 10. service
- 11. work areas
- 12. courtyard
- 13. protective wall

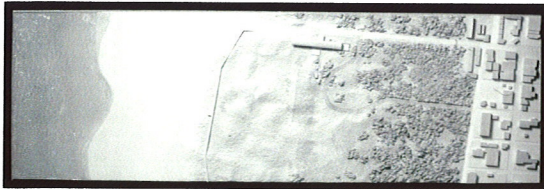




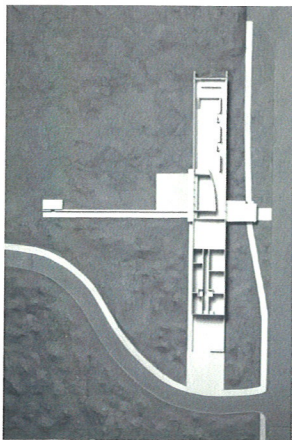
Kite Axon2.tif



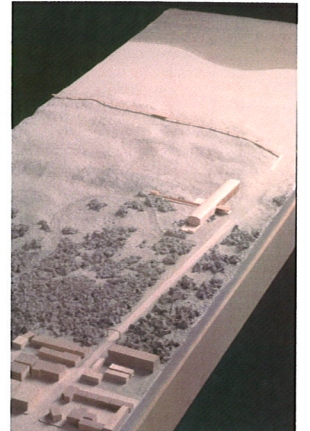
scan_8.tif



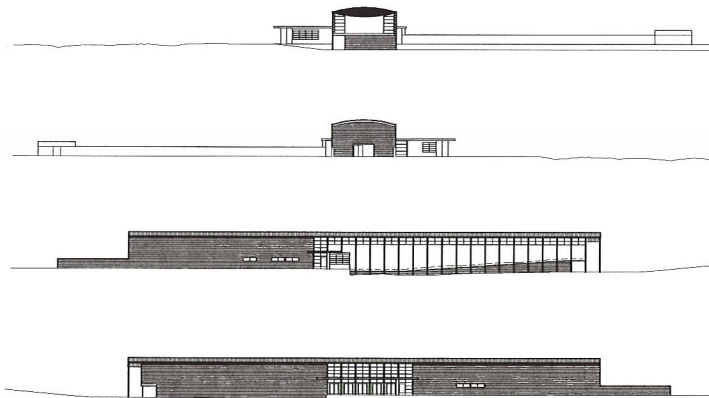
3Site Aerial b&w.tif



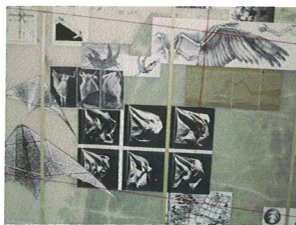
6Bldg Aerial Plan b&w.tif



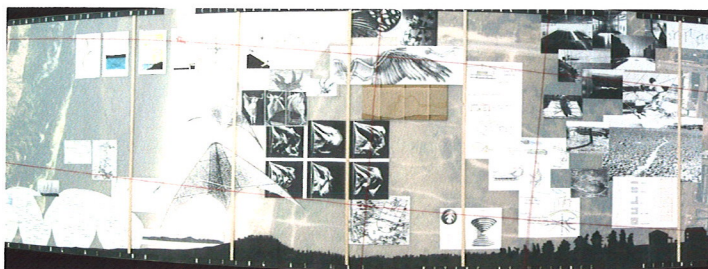
scan_4.tif



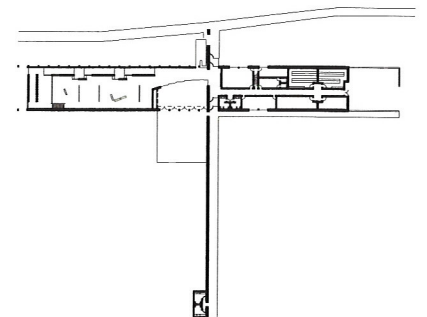
finishedkite-elev.WMF



World Kite Museum Concept 2.TIF



kite collage-revd.jpg



Kite SD Plans.WMF

