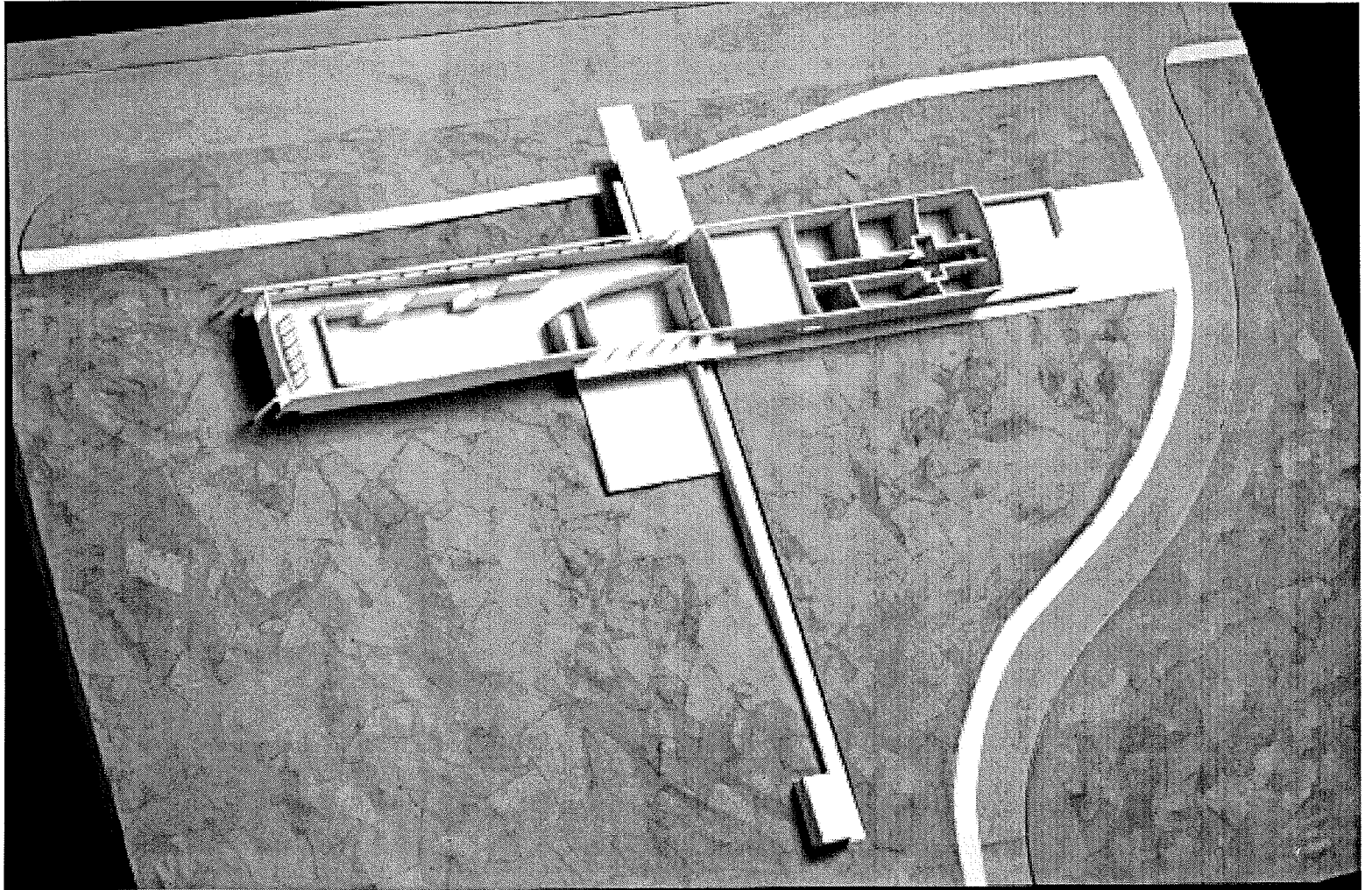
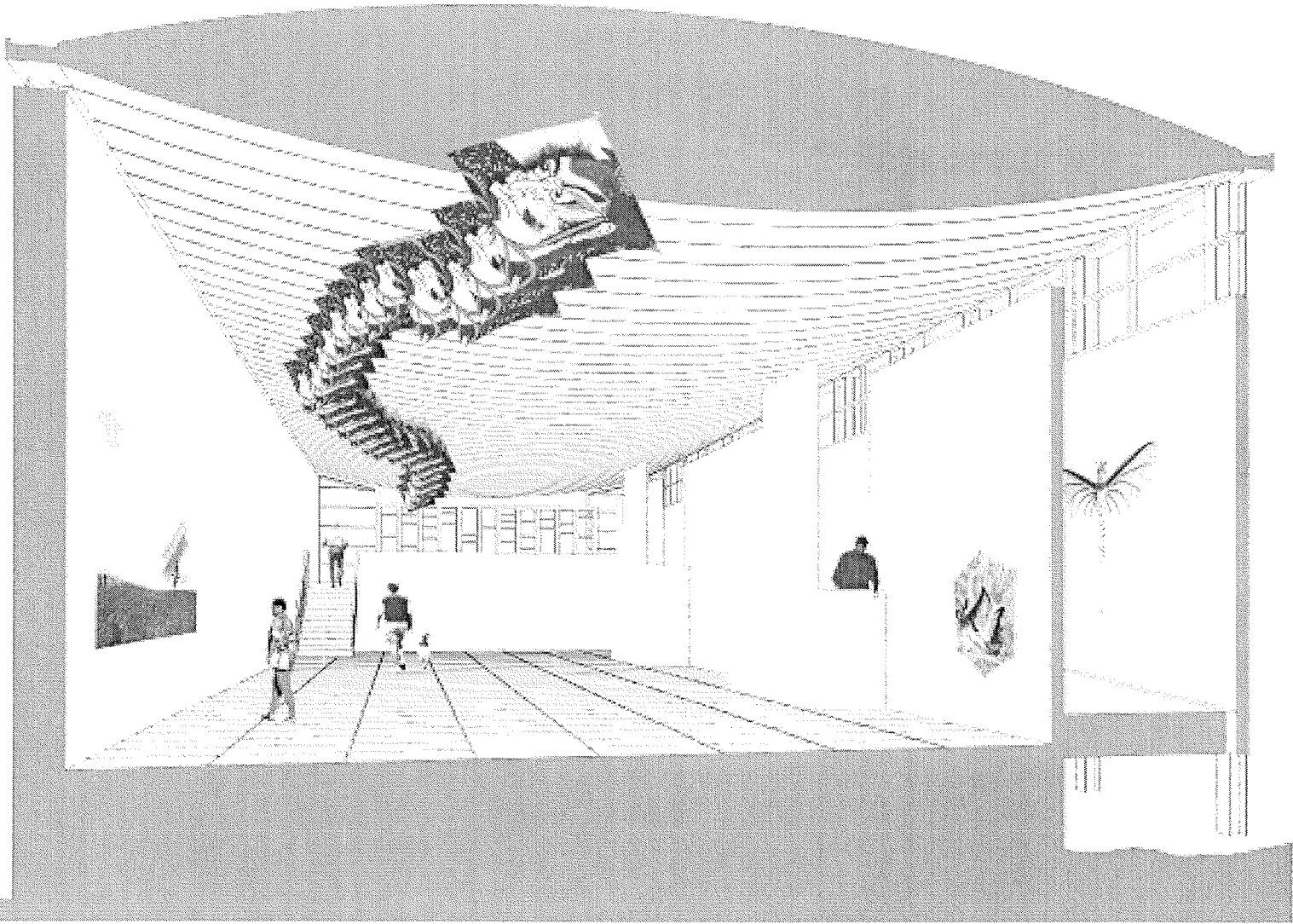


World Kitz Museum plans

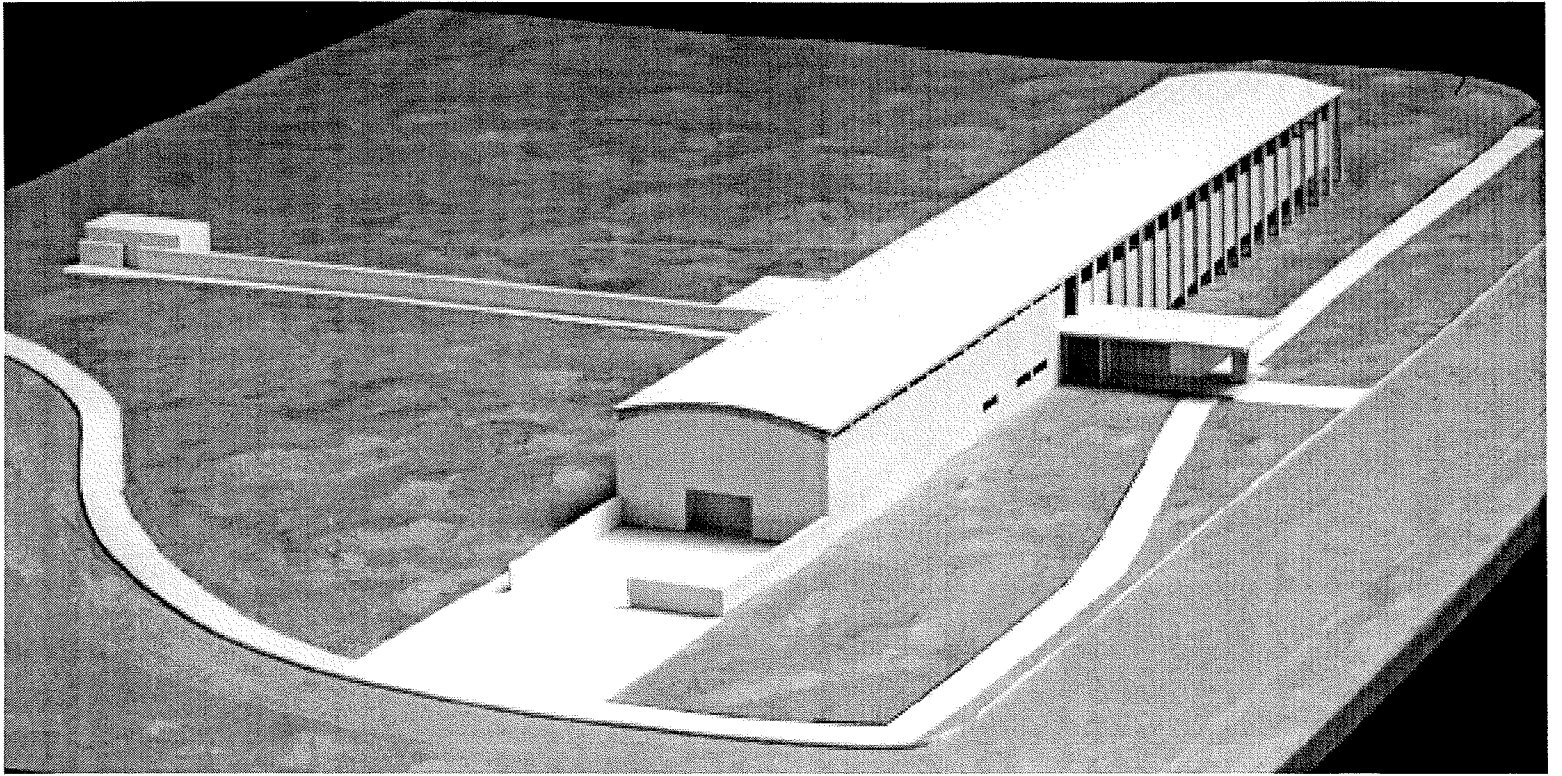


Fohleder Architects
Seattle

World Life Museum



Rohleder Architects
Seattle



World Kite Museum and Hall of Fame

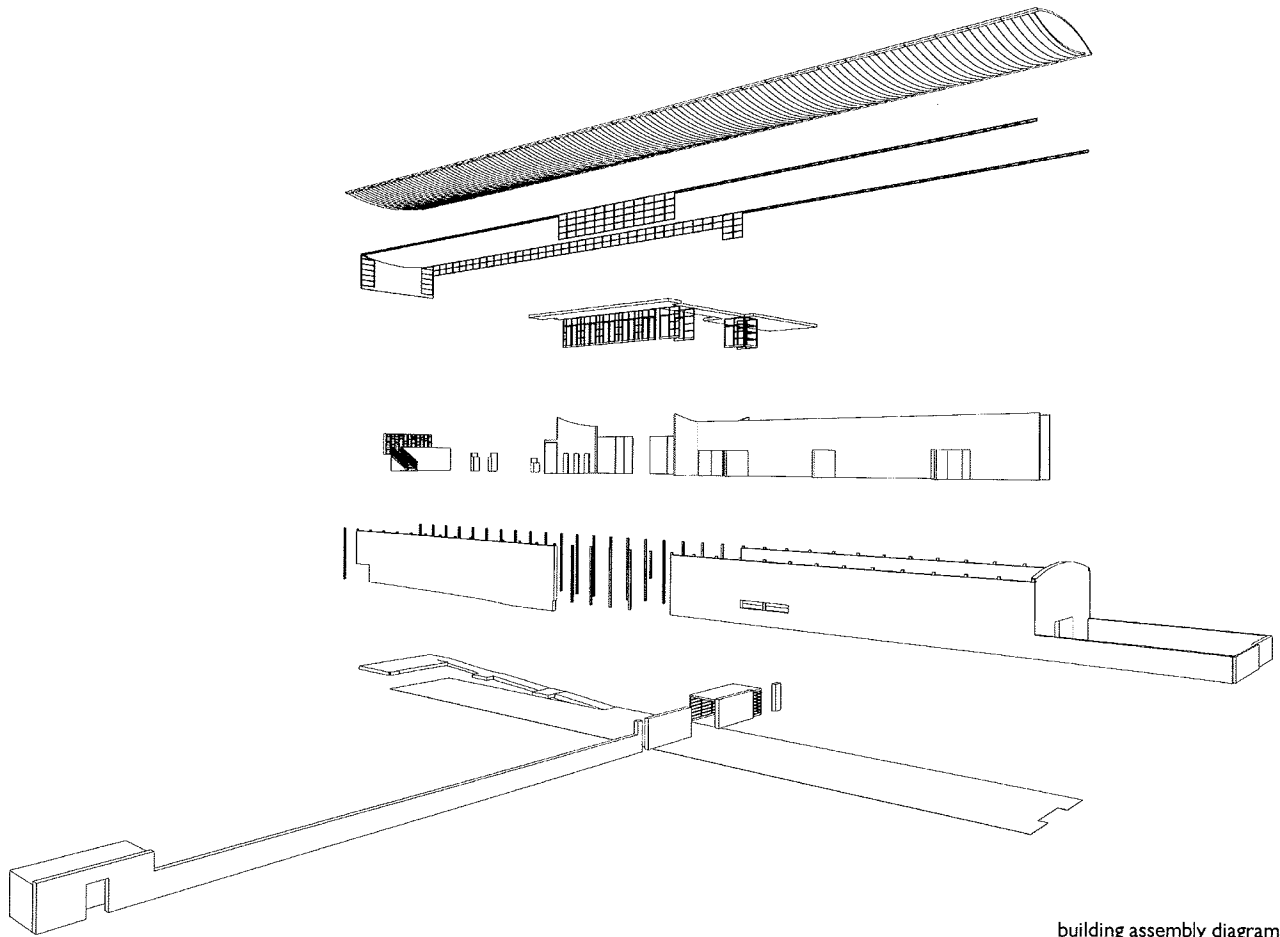
Long Beach, Washington

Schematic Design Completed March 2000

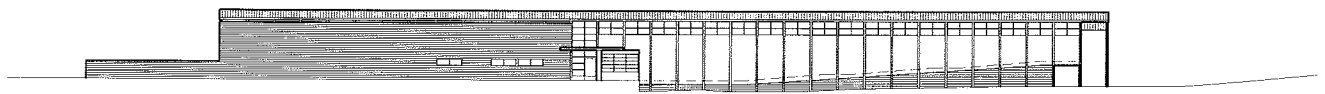


World Kite Museum and Hall of Fame

Long Beach, Washington



building assembly diagram

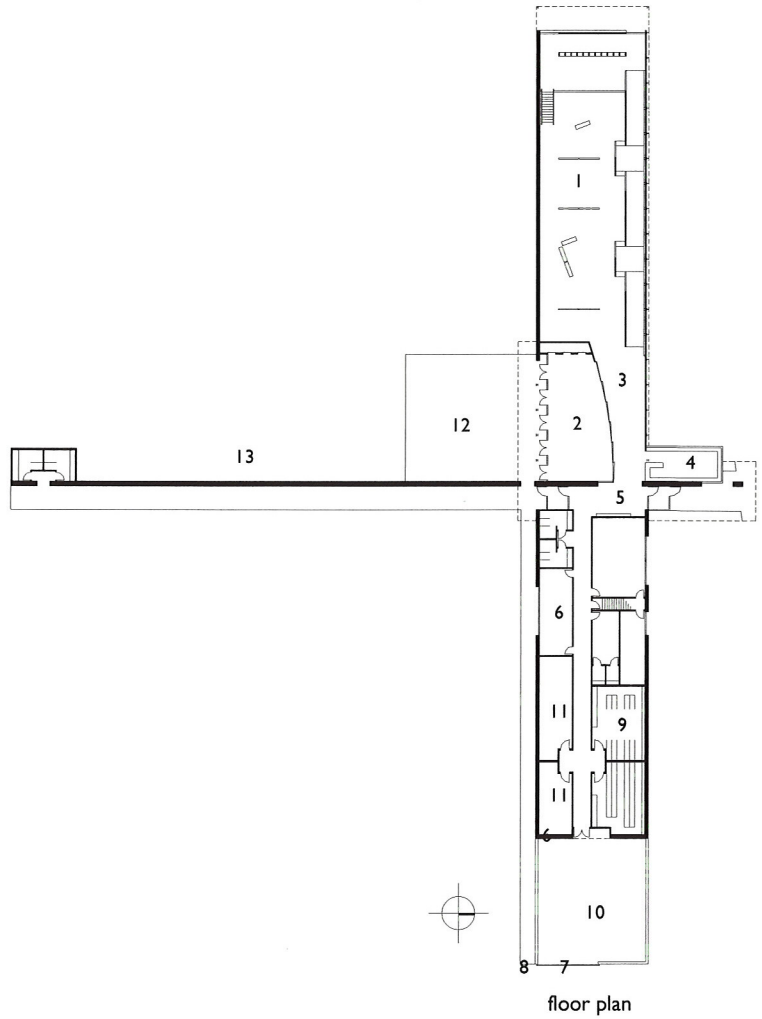
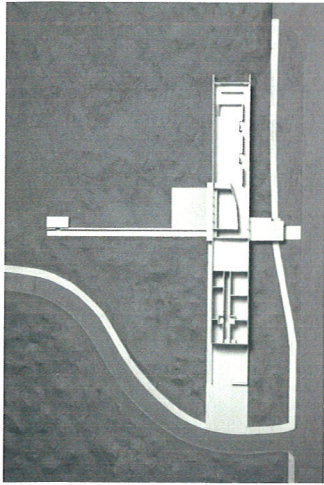


north elevation

This 15,000 square foot facility is sited in the rolling grasses and dunes of Washington's Long Beach Peninsula, a 30-mile stretch of beach just north of the mouth of the Columbia River on the Pacific Ocean. The long narrow building rises up out of the earth, pointing toward the ocean and sky. Archival storage and administration offices occupy the grounded end of the building, counterbalancing the light, airy exhibit hall that will house one of the world's largest collections of kites. The building is bisected by a north-south wall, which signals the entrances and protects an outdoor courtyard to the southwest. The calm, quiet nature of the building contrasts with the lively, ephemeral objects it holds. Building forms were designed and materials were selected to withstand the often violent forces of nature encountered on the exposed site.

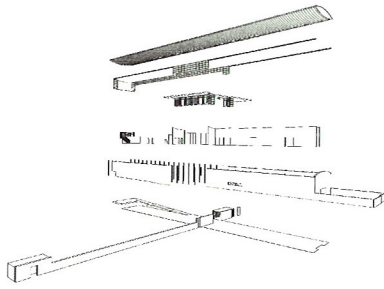
World Kite Museum and Hall of Fame

Long Beach, Washington

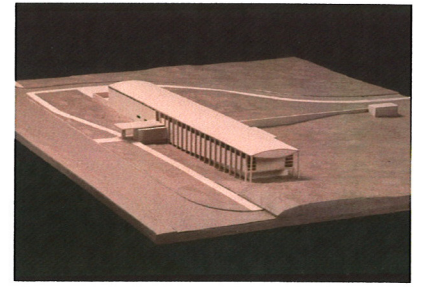


- 1. exhibit hall
- 2. multi-purpose room
- 3. rolling wall
- 4. lobby
- 5. gift shop
- 6. administration
- 7. archival storage
- 8. research
- 9. collections
- 10. service
- 11. work areas
- 12. courtyard
- 13. protective wall

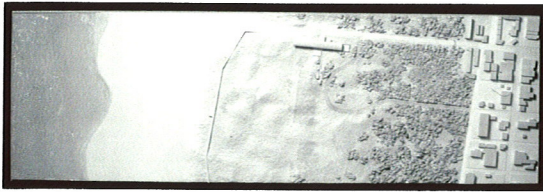




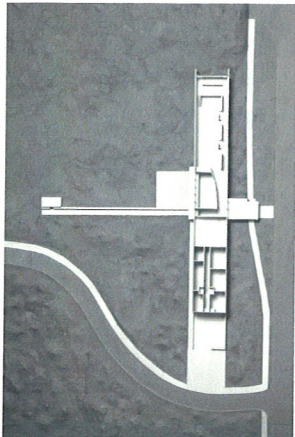
Kite Axon2.tif



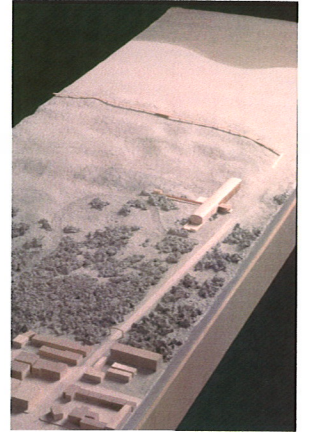
scan_8.tif



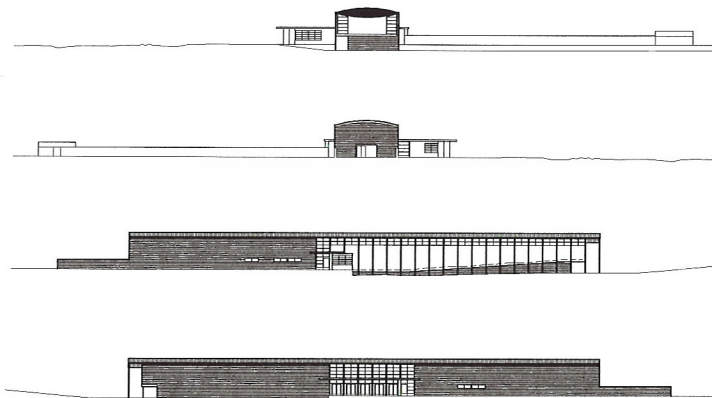
3Site Aerial b&w.tif



6Bldg Aerial Plan b&w.tif



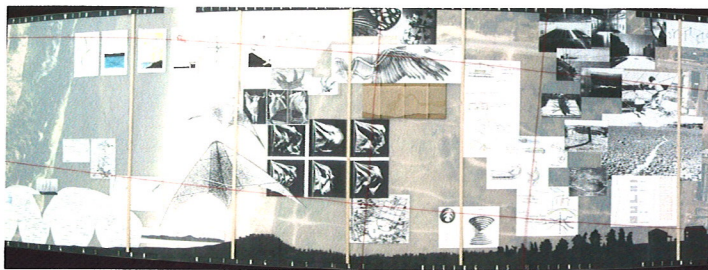
scan_4.tif



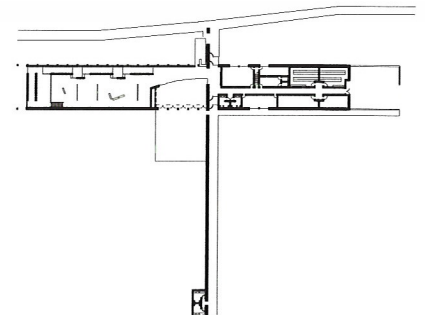
finishedkite-elev.WMF



World Kite Museum Concept 2.TIF



kite collage-revd.jpg



Kite SD Plans.WMF

